



Dorset Mews, London, N3

Located within a 5 minutes walk of Finchley Central Tube Station & within easy reach of local shopping amenities is this well presented 1 bedroom maisonette. Benefits include a semi open plan kitchen with appliances, living room, double bedroom, tiled bathroom with shower over bath, neutral décor & wood flooring throughout.

£1,450
Per Calendar
Month

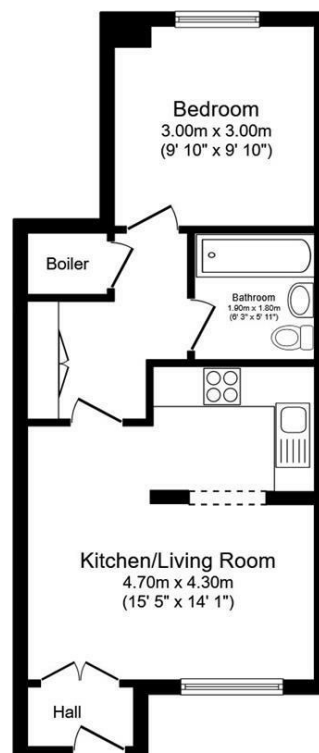
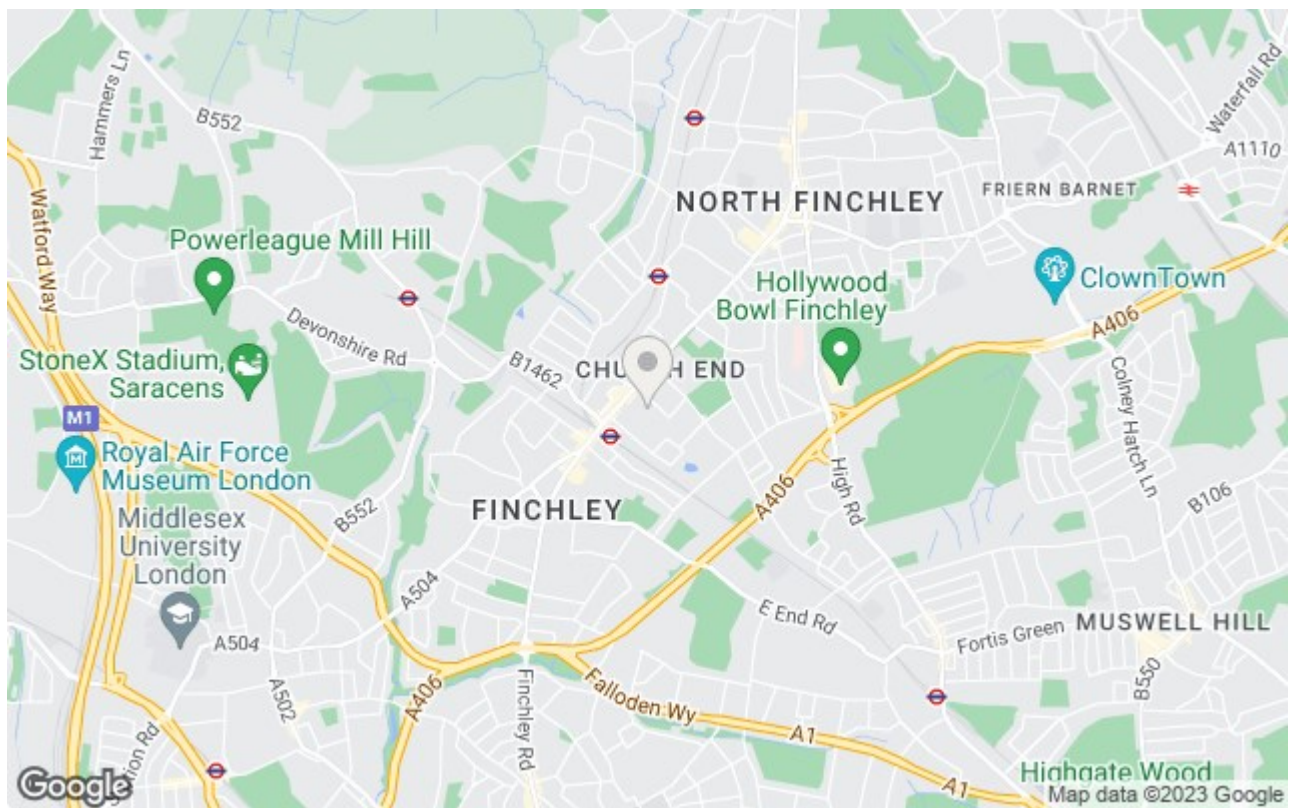
1  1  1  C 



**FINCHLEYS
ESTATES**

CLIENT FOCUSED. RESULTS DRIVEN.





Total floor area 39.7 sq.m. (427 sq.ft.) approx

This floor plan is for illustrative purposes only. It is not drawn to scale. Any measurements, floor areas (including any total floor area), openings and orientation are approximate. No details are guaranteed, they cannot be relied upon for any purpose and they do not form part of any agreement. No liability is taken for any error, omission or misstatement. A party must rely upon its own inspection(s).
Powered by www.focalagent.com



11 STATION ROAD
FINCHLEY
LONDON
N3 2SB
02083461180